

1. Click on the Apple Logo in the Top left corner and choose “System Preferences” from the drop down menu.



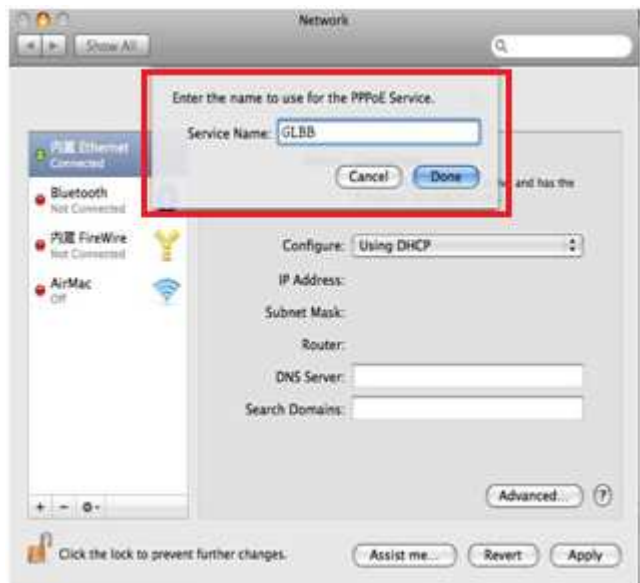
2. Next, choose “Network” from the Categories



3. The Network menu should open. Make sure that Ethernet is chosen in the list on the left side. In the right section, Click on the drop down menu next to “Configure” and choose “Create PPPoE Service”



4. Next, type “GLBB” in the “Service Name” line. And press the “Done” button below.



5. Next, choose “GLBB” connection that appears in the menu to the left. Input your login information. This information is located on the blue GLBB Customer Information Sheet which was given to you during the initial signup.

Once the information is inputted, press the “Apply” button below.



6. Next, press the “Connect” button and your computer will now attempt to login to the internet.

